

INSTALLATION INSTRUCTIONS



Flexible mounting of wire \varnothing 8 mm

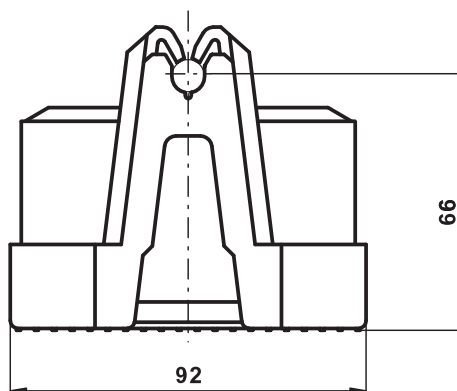
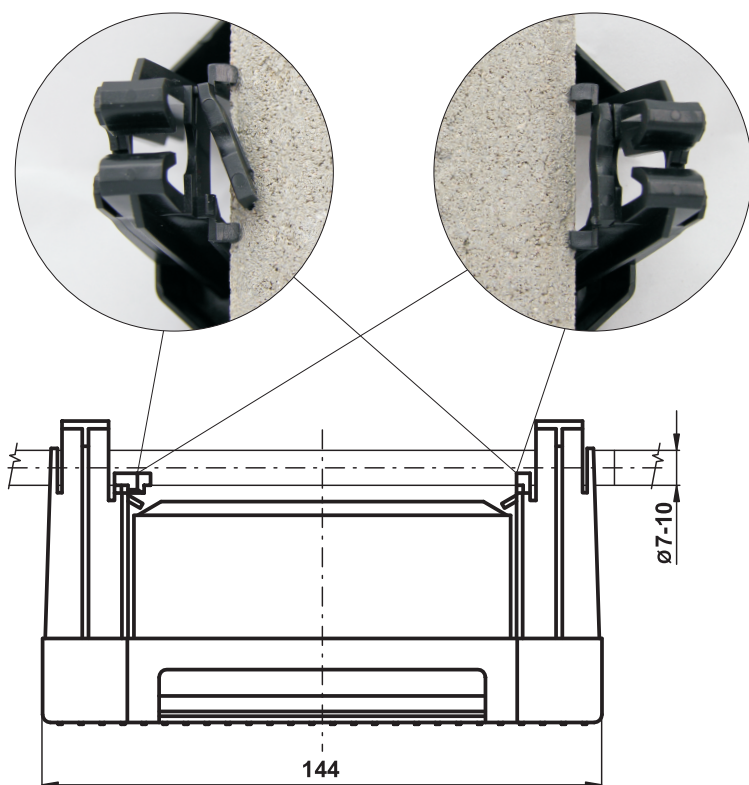
Struts remain not locked (they do not click), after fixing the wire the connection is free and allows expansion or movement in the wire.

Fixed mounting of wire \varnothing 8 mm

Struts are inserted into grooves, locked (they click), after fixing the wire the connection is fixed.

CONDUCTOR SUPPORT FOR FLAT ROOFS PV 21d - new version

Marking	Weight (kg)	Packing (pcs)	Item No.
PV 21d	1,000	10	V251



Application: Fixing of wire (conductors) on flat roofs.

Material: Plastic (stabilized PE against UV radiation) fixed with concrete block.

Advantages: The support allows both free and fix connection of wire \varnothing 8 mm.